

## SENSOR TEMPERATURE DOGBONE™

### Temperature Level Sensing Inlay

SMARTRAC's first state-of-the-art SENSOR TEMPERATURE DOGBONE™ brings new temperature detection features to the company's product range of passive sensor inlays and tags. It is designed to measure temperature conditions, e.g. in cold chain management, and to detect crucial temperature settings in many other demanding environments.

The SMARTRAC SENSOR TEMPERATURE DOGBONE is a passive UHF inlay equipped with RFMicron's Magnus® S3 IC. This RFID sensor inlay offers great performance, and accurately detects and measures temperature and optionally moisture levels in the surrounding environment. The temperature sensing range is available as single-point-calibration or two-point-calibration according to customer preferences for measurement accuracy. It provides accurate read results as determined by the customer's selected calibration needs. Additionally, the IC offers the option to read the sensor code and on-chip RSSI (Received Signal Strength Indicator) value to detect how much power the IC is receiving from the reader.

The sensing information is digitized and wirelessly communicated to off-the-shelf readers, and operates with specially developed software for temperature sensing.

The innovative SENSOR TEMPERATURE DOGBONE is a passive UHF single-chip sensor inlay solution that offers cost-efficiency and ease of implementation. SENSOR TEMPERATURE DOGBONE is available as a wet inlay, and can be delivered with TID list and sensor code values for increased accuracy and complementary data analysis, in conjunction with SMART COSMOS, the company's Internet of Things platform.

#### Overview

**Operating Frequency**  
860 - 960 MHz (ETSI)

**Integrated Circuit (IC)**  
RFMicron Magnus®S3

**Antenna Size**  
89 × 24mm / 3.5 × 0.9 in

**Die-cut Size**  
97 × 27mm / 3.8 × 1.1 in

#### International Standards

▶ EPC Class 1 Gen 2  
v.2.0.0 ISO 18000-6C

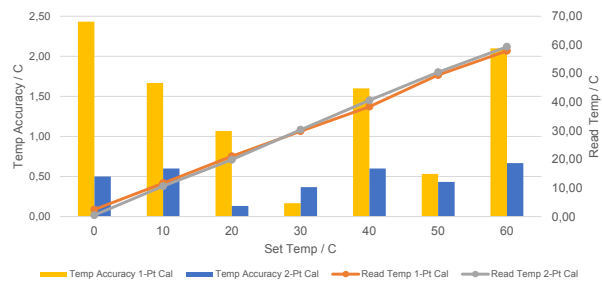
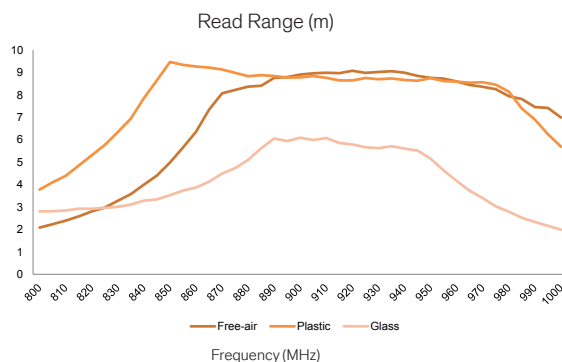
#### Application Areas

- ▶ Cold chain management
- ▶ Diverse temperature sensing environments

# SENSOR TEMPERATURE DOGBONE™

Temperature Level Sensing Inlay

Technical Features			
<b>IC + Memory</b> RFMicron Magnus®S3 128 bit EPC + 176 bit user memory	<b>Size</b> 97 × 27mm / 3.8 × 1.1 in	<b>Format</b> Wet	<b>Sales Code</b> 3005527
Frequency	860-960 MHz (ETSI band)		
Antenna Size	89 × 24mm / 3,5. × 0.9 in		
Die-Cut Size	97 × 27mm / 3.8 × 1.1 in		
Web Width	100 mm / 3.9 in		
Operating Temperature	-40 °C to +85 °C / -40 °F to +185 °F		
Adhesive	RA-2		
Qty/Reel	2.000 pcs		
Core Size	76 mm / 3 in		
Shelf Life	+20 °C, 50 % RH / 68 °F, 50 % RH - minimum 2 years from the date of manufacturing		



All the graphs are indicative: performance in real life applications may vary. The data has been determined based on calculations for transmitters with a 2W ERP output power level.

**SMARTRAC N.V. · Strawinskylaan 851 · 1077 XX Amsterdam · The Netherlands**

Phone: +31 20 30 50 150 · Fax: +31 20 30 50 155

**Contact: Sales & Customer Service**

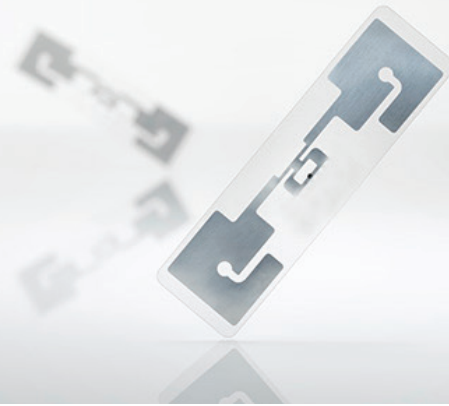
[www.smartrac-group.com/contact](http://www.smartrac-group.com/contact)



© 2018 SMARTRAC N.V.

All rights reserved. Reproduction in whole or in part is prohibited without the prior written consent of the copyright owner. The information presented in this document does not form part of any quotation or contract, is believed to be accurate and reliable and may be changed without notice. No liability will be accepted by the publisher for any consequence of its use.





## SENSOR TEMPERATURE DOGBONE™

### Temperature Level Sensing Inlay

SMARTRAC's first state-of-the-art SENSOR TEMPERATURE DOGBONE™ brings new temperature detection features to the company's product range of passive sensor inlays and tags. It is designed to measure temperature conditions, e.g. in cold chain management, and to detect crucial temperature settings in many other demanding environments.

The SMARTRAC SENSOR TEMPERATURE DOGBONE is a passive UHF inlay equipped with RFMicron's Magnus® S3 IC. This RFID sensor inlay offers great performance, and accurately detects and measures temperature and optionally moisture levels in the surrounding environment. The temperature sensing range is available as single-point-calibration or two-point-calibration according to customer preferences for measurement accuracy. It provides accurate read results as determined by the customer's selected calibration needs. Additionally, the IC offers the option to read the sensor code and on-chip RSSI (Received Signal Strength Indicator) value to detect how much power the IC is receiving from the reader.

The sensing information is digitized and wirelessly communicated to off-the-shelf readers, and operates with specially developed software for temperature sensing.

The innovative SENSOR TEMPERATURE DOGBONE is a passive UHF single-chip sensor inlay solution that offers cost-efficiency and ease of implementation. SENSOR TEMPERATURE DOGBONE is available as a wet inlay, and can be delivered with TID list and sensor code values for increased accuracy and complementary data analysis, in conjunction with SMART COSMOS, the company's Internet of Things platform.

#### Overview

**Operating Frequency**  
860 - 960 MHz (FCC)

**Integrated Circuit (IC)**  
RFMicron Magnus®S3

**Antenna Size**  
89 × 24mm / 3.5 × 0.9 in

**Die-cut Size**  
97 × 27mm / 3.8 × 1.1 in

#### International Standards

▶ EPC Class 1 Gen 2  
v.2.0.0 ISO 18000-6C

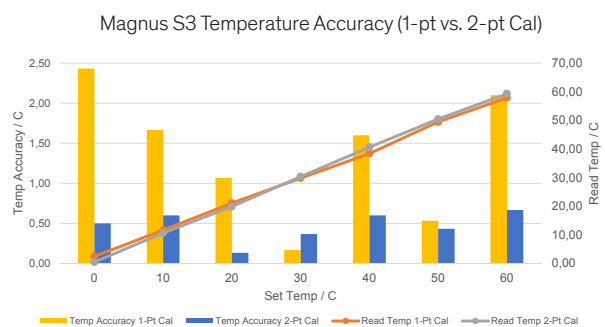
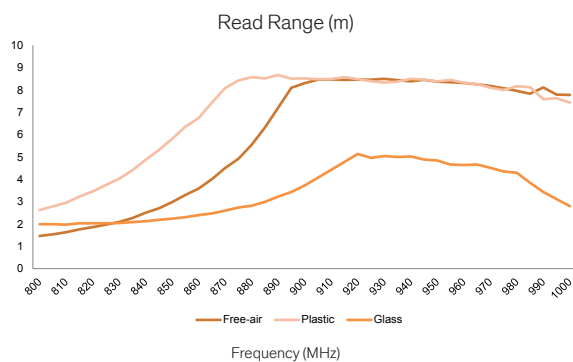
#### Application Areas

- ▶ Cold chain management
- ▶ Diverse temperature sensing environments

# SENSOR TEMPERATURE DOGBONE™

Temperature Level Sensing Inlay

Technical Features			
<b>IC + Memory</b> RFMicron Magnus®S3 128 bit EPC + 176 bit user memory	<b>Size</b> 97 × 27mm / 3.8 × 1.1 in	<b>Format</b> Wet	<b>Sales Code</b> 3005532
Frequency	860-960 MHz (FCC band)		
Antenna Size	89 × 24mm / 3,5. × 0.9 in		
Die-Cut Size	97 × 27mm / 3.8 × 1.1 in		
Web Width	100 mm / 3.9 in		
Operating Temperature	-40 °C to +85 °C / -40 °F to +185 °F		
Adhesive	RA-2		
Qty/Reel	2.000 pcs		
Core Size	76 mm / 3 in		
Shelf Life	+20 °C, 50 % RH / 68 °F, 50 % RH - minimum 2 years from the date of manufacturing		



All the graphs are indicative: performance in real life applications may vary. The data has been determined based on calculations for transmitters with a 2W ERP output power level.

**SMARTRAC N.V. · Strawinskylaan 851 · 1077 XX Amsterdam · The Netherlands**  
Phone: +31 20 30 50 150 · Fax: +31 20 30 50 155

**Contact: Sales & Customer Service**  
[www.smartrac-group.com/contact](http://www.smartrac-group.com/contact)



© 2018 SMARTRAC N.V.

All rights reserved. Reproduction in whole or in part is prohibited without the prior written consent of the copyright owner. The information presented in this document does not form part of any quotation or contract, is believed to be accurate and reliable and may be changed without notice. No liability will be accepted by the publisher for any consequence of its use.  
[info@smartrac-group.com](mailto:info@smartrac-group.com)

