



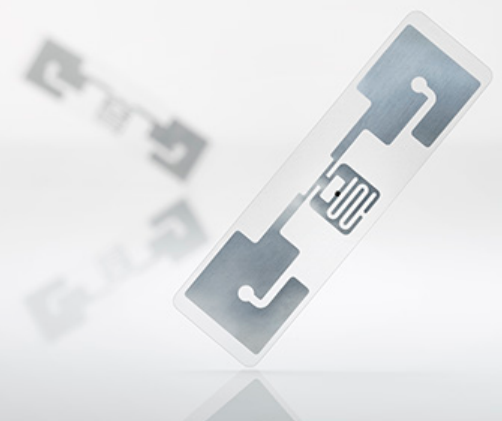
smart cosmos

sensors

Sensors for Roofs - Getting Started Guide

The Solution

Sensors for Roofs is a turnkey solution that enables building and facility inspectors to quickly and reliably test for the presence of moisture in roofing systems. This unique and non-invasive solution provides a new way to quantify the health of a roof versus the highly destructive and invasive tests currently available.



How It Works

An inspector walks across the roof with a smartphone connected to a handheld reader, capturing the moisture levels reported by sensors that are directly integrated into the roofing material. Moisture levels are transmitted directly to the Cloud via the smartphone's

Internet connection, where the data can be compared with historical readings or results made available for immediate download in several different formats.

Hardware Components:

- Passive RAIN RFID (UHF) moisture sensors to be embedded directly in the roof
- A handheld RAIN RFID (UHF) reader with Bluetooth compatibility to read the Moisture and Dry values over a distance of multiple yards/meters
- An Android based smartphone/tablet

Software Component:

- An app downloadable to the smartphone/tablet from Google Play Store to:
 - register the installed sensors in a roof to a building and capture their geolocation data
 - analyze the moisture levels to detect leaks
 - record the inspection walk results



smart cosmos

sensors

Sensors for Roofs - Getting Started Guide

Requirements

- SMARTRAC´s SENSOR DOGBONE RAIN RFID (UHF) tags
- Nordic ID EXA51 RAIN RFID (UHF) Reader
- Android mobile device with minimum Android 4.0, screen size: minimum 5 inch, Bluetooth support, Internet connectivity, GPS

Content of the Starter Kit

- Getting started guide
- 1 x Nordic ID EXA51 RAIN RFID (UHF) Reader
- 20 x SMARTRAC´s SENSOR DOGBONE RAIN RFID (UHF) tags

Getting Started Instructions

1. Download the “Sensors for Roofs” app from Google Play store
2. Ensure that Bluetooth is activated on your Android device
3. Launch the app
4. Enter your Sensors credentials or use the settings menu in the top left corner to request credentials
5. Run the sensor registration workflow and follow the instructions
 - a. The application will capture all the moisture level of all SENSOR DOGBONE tags in range
 - b. Click “Done” when you are finished

6. Run the sensor check workflow to compare the actual and the registered moisture level of all SENSOR DOGBONE tags in range
 - a. Click “Done” when you are finish
 - b. The application will create a report
7. Click on show reports to see a list of your sensor check reports
 - a. You might have to install the proposed file browser application first
 - b. Review or submit the generated report file to your colleagues

Learn More About

SMART COSMOS solutions
www.smart-cosmos.com/solutions/

SENSOR DOGBONE RAIN RFID (UHF) tags
www.smartrac-group.com/sensor-dogbone.html

Contact: Sales & Customer Service

www.smart-cosmos.com/contact

**SMARTRAC N.V. Strawinsky laan 851
1077 XX Amsterdam The Netherlands**

Phone: +3120 30 50 150 Fax: +3120 30 50 155

info@smartrac-group.com

Technical Support

- Reach out directly to your SMARTRAC sales representative
- Send an email to sensors-support@smartrac-group.com